

Octo90 & Octo150

Owner's Handbook

Octo90 & Octo150

Owner's Handbook



BOWENS
the power behind the picture

BOWENS
the power behind the picture

warranty

Contents	
Warranty	2
CE Mark	2
Introduction	3
Safety Notes	3
Accessories	3
Specifications	3
Assembly	4 - 5
Operation	6
Other Softboxes	7

This product is covered by a two year warranty against any faulty design, materials and workmanship.


If a product does not work on arrival or up to a maximum period of four weeks from the date of purchase, it should be returned to the dealer/retail outlet from where it was purchased, to exchange (if available) the faulty unit for a new one; if the faulty unit was part of a kit that was purchased, the dealer / retailer may choose to simply replace the unit and not the entire kit. Alternatively the dealer may offer to repair the unit as soon as possible at no charge.

If neither an exchange or repair is possible for the faulty unit, then a full refund may be made.

If a warranty fault occurs after the initial four week period (and within the max two year warranty period), then the unit should be returned to the dealer, who will arrange to repair the unit as soon as possible, at no charge.

This warranty does not apply to consumable items.

All Bowens products are certified by the CE mark. The CE certified mark is a declaration of conformity to the required EEC directives 89/336/EEC ‘Electromagnetic Compatibility’ and 73/23/EEC ‘Low Voltage Directive’.



Should a unit be returned at any time within the two year warranty period, and it is judged to have experienced any of the following points, failure to follow working instructions correctly, accidental or willful damage, misuse, alteration or repair by a non authorised Bowens service / repair centre, then the warranty will be deemed invalid and any repairs that may need carrying out will be payable by the owner.

The cost of any repairs should be notified to the owner, by the dealer, in advance of undertaking any work that may be required.

No warranty repairs can be undertaken to any units without proof of purchase.

All warranty repairs or returns must be conducted with the dealer from where the product was purchased.

Other terms and conditions may be applicable in specific countries, if stated by the dealer at the time of purchase.

introduction

safety notes

Thank you for choosing Bowens range of Octo softboxes. The Octo90 and Octo150 has been designed by working closely with photographers to develop a softbox that meets the high-quality standards required in todays professional studios. In order to obtain the full benefit from

your purchase, please take a few moments to familiarise yourself with this user manual. For more information on all Bowens products and to find details of your nearest Bowens dealer, please visit the Bowens website: www.bowens.co.uk

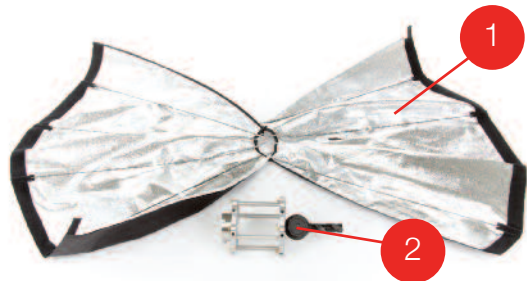
- NEVER restrict air vents while unit is in use.
- All Bowens Octo boxes are designed for use with a flash unit to a limit of 3000Ws.

accessories

specifications

Model	Octo90	Octo150	Model	Octo90	Octo150
Gold reflector	BW-1644	BW-1644	Diameter	90cmØ (3'Ø)	150cmØ (5'Ø)
Silver/Gold reflector	BW-1643	BW-1643	Depth	75cm (2½')	75cm (2½')
Diffusion reflector	BW-1645	BW-1645	Weight	4.7kg (10lbs)	6.4kg (14lbs)
Front diffuser	BW-1641	BW-1642	Part Number	BW-1640	BW-1650

StepONE



Place the Octo90 (or Octo150) canopy (1) and the casting (2) on the floor ready for assembly.

StepTWO



Place the casting in the centre of the canopy and insert all of the rods into the casting as shown.

StepTHREE



Pull two sides together and hold them in place using the hook and loop fastening strip (3) as indicated.

StepFOUR



After the hook and loop fastening strip is in place, pull the zip up from the centre of the canopy towards the outer edge to secure one side of the Octobox.

StepFIVE



Repeat steps three and four for the opposite side of the Octobox. Your unit should appear as above. Ensure zip flaps are seated on hook and loop fastening strips inside reflector.

StepSIX



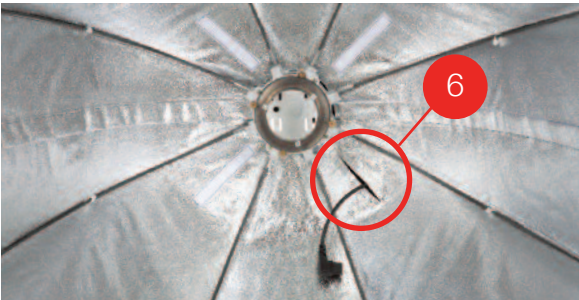
For optimum use (see page 6) connect the Octobox to a support stand using the stand adaptor (4) as shown above (ensure all thumb screws are fully tightened).

StepSEVEN



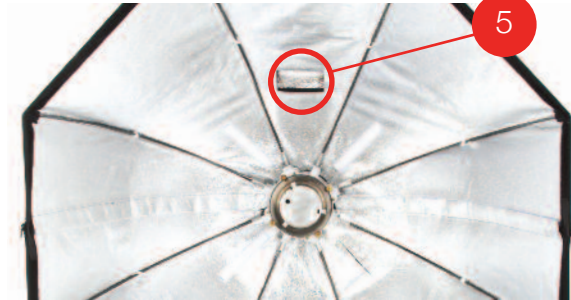
Connect the adjustment handle to the rear of the casting as indicated above.

StepNINE



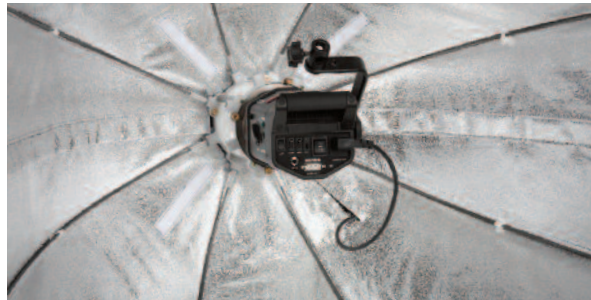
Pull the appropriate cabling (mains/sync lead) through the cable slit (6) on the Octobox.

StepEIGHT



(Octo90 Only) Ensure the air vent (5) on the Octo90 is positioned above the casting.

StepTEN



Connect your chosen flash unit to the casting and attach the mains cable as shown above.

StepELEVEN



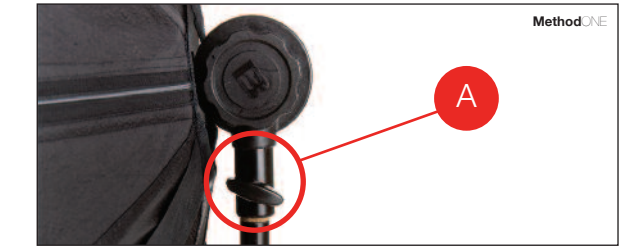
Finally attach the diffuser to your Octobox. Your completed unit should appear as above.

operation

Mounting Octobox to a Support Stand

There are two ways to mount your chosen Octobox to a support stand:

Method ONE - The mount bush (A) on the rear of the Octobox casting can be mounted directly to any support stand as indicated below.



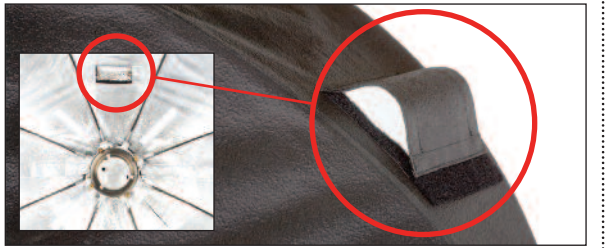
Method TWO - For optimum use connect the mount bush to a support stand using the 'stand adaptor'. Method two allows the Octobox to have a greater angle of adjustment.



Air Vent

The Octo90 features an air vent to minimise the build-up of heat. During long periods of operation the air vent **MUST** remain open to allow heat to escape and to prevent extreme temperatures within the Octobox.

If the vent is closed during operation do not use a modelling bulb greater than 275W.

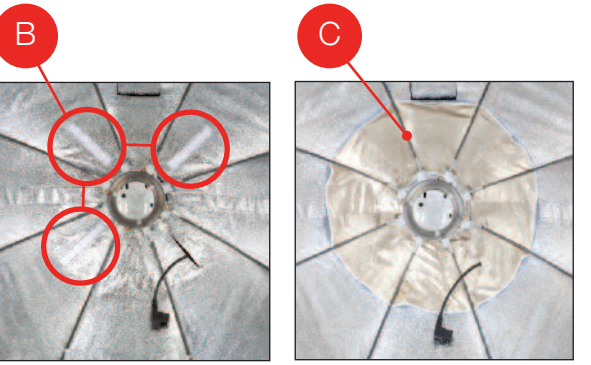


Reflectors

Attaching reflectors

Ensure that the attached hook and loop strips inside the Octobox (B) match up with the hook and loop strips on the reverse of the reflector.

To mount a reflector securely position behind canopy support rods (C) to ensure reflector cannot come into contact with the flashtube or modelling lamp.



Octo90

The Octo90 is supplied with **two tone reflectors** for creating perfect skin tones in beauty and portraiture photography. The two types of included tone reflectors are **one gold reflector** (D) and **one silver/gold reflector** (E).



Octo150

The Octo150 is supplied with **one diffusion reflector** (F) for eliminating hotspots (when used with higher powered units) and for creating a softer, more even output.



other softboxes

Portrait Wafers

Available in five sizes



Wafer 56

56 x 25 x 28cm (22 x 9 7/8 x 11")
BW1894 Wafer 45

Wafer 75

75 x 50 x 28cm (29 1/2 x 19 3/4 x 11")
BW1895 Wafer 75

Wafer 100

100 x 75 x 35cm (39 3/8 x 29 1/2 x 13 7/8")
BW1896 Wafer 100

Wafer 140

140 x 100 x 50cm (55 1/8 x 39 3/8 x 19 3/8")
BW1897 Wafer 140

Wafer 200

200 x 140 x 65cm (78 3/4 x 55 1/8 x 25 1/2")
BW1898 Wafer 200

Strip Wafers

Available in three sizes



Wafer Strip 100

100 x 38 x 25cm (39 3/8 x 15 x 9 3/4")
BW1180 Wafer Strip 100

Wafer Strip 140

140 x 35 x 50cm (55 x 13 3/4 x 19 3/4")
BW1181 Wafer Strip 140

Wafer Strip 200

200 x 70 x 62cm (78 3/4 x 27 1/2 x 24 1/2")
BW1184 Wafer Strip 200

Hexagonal Wafers

Available in three sizes



Wafer Hex 100

100 x 70 x 30cm (39 3/8 x 27 1/2 x 12")
BW1195 Wafer Hex 100

Wafer Hex 140

140 x 95 x 37cm (55 1/8 x 37 3/8 x 14 1/2")
BW1182 Wafer Hex 140

Wafer Hex 180

180 x 135 x 52cm (70 7/8 x 53 1/2 x 20 1/2")
BW1183 Wafer Hex 180

Portrait Softboxes

Available in four sizes



Softbox 60/80

60 x 80cm (23 1/2 x 31")
BW1665 Softbox 60/80

Softbox 80/100

80 x 100cm (31 x 39 3/8")
BW1675 Softbox 80/100

Softbox 100/100

100 x 100cm (39 3/8 x 39 3/8")
BW1680 Softbox 100/100

Softbox 140/100

140 x 100cm (55 x 39 3/8")
BW1685 Softbox 140/100

Strip Softboxes

Available in two sizes



Softstrip 100

100 x 40cm (39 3/8 x 15 3/4")
BW1670 Softstrip 100

Softstrip 140

140 x 40cm (55 x 15 3/4")
BW1690 Softstrip 140