



# create

## movingimage



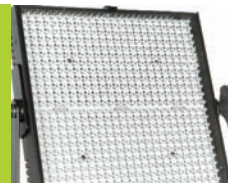
*a leading light since 1963*

Bowens has been a world-leader in photographic lighting research, development and manufacturing for over 50 years. Now with the growing convergence of photography & videography, we have turned our skills to developing a range of products to cater for video & broadcast creatives in both fields. Our Limelite range of professional quality video products cover LED, fluorescent & tungsten lighting plus support & grip gear.

# contents

**4**

High powered LED panel range. Three times brighter than similar lights.



Mosaic LED Panels

**8**

Tilting & rotating DMX controlled, flicker-free fluorescent light banks.



Studiolite DMX Fluorescent

**12**

Compact and rugged, focussing zoom floodlight with in-line dimming.



Pixel Variable Zoom Light

**11**

A constant stream of beautiful daylight balanced cool fluorescent light.



Streamlite

**14**

Lightweight, portable, versatile. Super-high resolution HD Field Monitors.



M7 & M7plus+ Monitors

**18**

Handheld and shoulder mounted HD-DSLR camera support rigs with follow focus.



Comodo Support Rig

**22**

Tough, sturdy, dependable support for lighting in studio or on location.



Lighting Support Stands

**24**

Reach further with precise and unlimited directional lighting control.



Lighting Support Booms

**26**

Precision, pin-point control of the speed and direction of air flow.



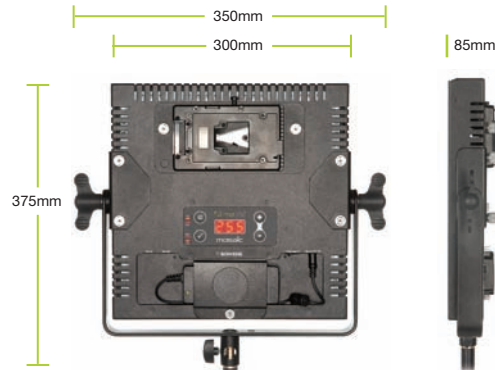
Wind Machines

## LED lighting



The high-powered Mosaic LED panels provide up to 5200 Lux of high-quality (>85 CRI), brilliant light at whatever colour temperature is required - perfect for both studio and location video lighting or photography.

Available in three models, calibrated to Daylight (5600°K), Tungsten (2800°K) or Bi-Colour for a user-defined colour temperature, the Mosaic features 576 ultra-bright fully dimmable LEDs, providing an output that is around **three times brighter than similar lights**, a difference that is clearly visible.



### Features:



### Power & Control

With mains power and industry standard V-lock battery mount operation out of the box, and an optional Anton/Bauer battery mount the Mosaic is ready to go when you are anytime, anywhere. The intuitive onboard digital control panel with its digital display makes operating the Mosaic simple, and with full DMX in & out control, the Mosaic can be operated remotely just as easily. The memory function allows settings to be saved for quick recall at a later time.

### Better Connected

Multiple Mosatics can be linked together via standard RJ45 ethernet cables which means that multi-panel set-ups can be easily controlled from any other Mosaic panel.

### Go Large

Bank Mosaic units together to form a wall of quality light. Optional mounting kits are available to allow you to create blocks of two or four Mosaic panels together, creating larger sources of light.

**mosaic**  
DAYLIGHT ... TUNGSTEN ... BI-COLOUR



### Options:



### Everyone's Invited

LED Panels are traditionally seen as video lighting, but the Limelite Mosaic features a unique f/stop mode\* which converts the display to show the light output in f/stops making the versatile Mosaic just as useful for photographers.

With the multiple power, control, mounting and usage options together with the build quality of Bowens, the Mosaic is one of the most versatile and reliable LED panels available and one of the best value too.

\* Daylight & Tungsten models only.

exceptional quality and performance - as standard.



Mosaic Daylight LED Panel

**With 576 Power LEDs creating up to 4200 Lux of super-bright high quality brilliant 5600K (±300K) daylight, the Mosaic Daylight LED Panel is perfect for a wide variety uses.**

Dimmable from 100% to 0% via the onboard digital control panel or DMX control which is built-in as standard, this 1x1 panel is quick to set up and intuitive to use. When 1x1 is not a big enough light source, Mosaic units can be banked together easily to form 1x2 or 2x2 panel lights. Weighing in at just 1.4kg despite being made from tough aluminium rather than fragile plastic, the Mosaic is perfect for location duty as well as studio work.

**VB1000** Mosaic Daylight LED Panel

• For 230V models add UK, EUR or AUS to the code to ensure the correct power cord is included. For 117V models add USVL to the code for V-lock battery mount or USAB for Anton/Bauer battery mount.



Mosaic Tungsten LED Panel

**The Mosaic Tungsten LED Panel delivers up to 4500 Lux of stable, tungsten balanced (2800K ±300K) high-quality light - perfect for use with traditional hot lights - without the heat!**

Quick and easy to control via the digital control panel on the rear or the integral DMX system - the Mosaic is Dimmable from 100% to 0%. The tough, dependable aluminium built panel is lightweight at just 1.4kg. The versatile Mosaic LED panel can be stand mounted or ceiling mounted (with accessories) and can be banked together with other Mosaic panels to create larger light sources when required.

**VB1005** Mosaic Tungsten LED Panel

**mosaic**  
DAYLIGHT ... TUNGSTEN ... BI-COLOUR



Mosaic Bi-Colour LED Panel

**The best of both worlds! The Mosaic Bi-Colour LED Panel can be adjusted across the full spectrum from daylight to tungsten at the touch of a button.**

Using the built-in digital control panel or standard DMX it is simple and fast to adjust the colour temperature from 2800K to 5600K or the brightness from 100% to 0%. The 1x1 panel can be used on its own or banked into units of 1x2 or 2x2 with all units in sync via DMX or ethernet cables. Weighing just 1.4kg, the sturdy metal-bodied Mosaic panel is reliable and ready to go whenever and wherever you are.

**VB1010** Mosaic Bi-Colour LED Panel



## mosaic accessories

Colour Control Filter Set



A set of six filters for adjusting the intensity or colour temperature of the light output.

**VB1505** Colour Control

Colour Control FX Set



A set of ten filters for adding colour or cosmetic effects to the light output.

**VB1506** Colour FX

2x1 Panel Joining Kit



For joining two Mosaic units together. Includes joining plate and an extended swivel/tilt yoke.

**VB1515** 2x1 Panel Joining Kit

2x2 Panel Joining Kit



For joining four Mosaic units together. Includes joining plates and a larger swivel/tilt yoke.

**VB1516** 2x2 Panel Joining Kit

3 Pin XLR-RJ45 Adaptor



For converting a DMX 3 pin male or female XLR plug to an RJ45 male plug.

**VB1565** Male to Male

**VB1566** Female to Male

Anton/Bauer Battery Plate



For powering Mosaic units from an Anton/Bauer G-mount (or similar) battery.

**VB1555** Anton/Bauer Battery Plate

DMX / Ethernet Cable



DMX / Ethernet cable for linking Mosaic units together to form light banks or chains.

**VB1580** 1m cable

1x1 Honeycomb Grid



The Honeycomb Grid changes the Mosaic's beam from a broad, soft flood to a narrower, more concentrated beam.

**VB1503** 1x1 Honeycomb Grid

Ceiling Mounting Kit



For mounting a single Mosaic unit directly to a ceiling or other flat surface.

**VB1517** Ceiling Mount Kit

Mosaic Barn-Door Set



A set of four-leaf barn-doors (top, bottom and sides) for use with a single Mosaic unit.

**VB1500** Mosaic Barn-Door Set

2x1 Panel Barn-Door Set



A set of two-leaf barn-doors (top and bottom) for use with two joined Mosaic units.

**VB1501** 2x1 Panel Barn-Door Set

2x2 Panel Barn-Door Set



A set of two-leaf barn-doors (top and bottom or sides) for use with four joined Mosaic units.

**VB1502** 2x2 Panel Barn-Door Set

5 Pin XLR-RJ45 Adaptor



For converting a DMX 5 pin male or female XLR plug to an RJ45 male plug.

**VB1570** Male to Male

**VB1571** Female to Male

V-Mount Battery Plate



For powering Mosaic units from a V-mount fitting battery.

**VB1556** V-Mount Battery Plate

AC Power Cord



Spare/replacement 6m power cord for Mosaic.

**VB1541** UK plug (pictured)

**VB1540** Euro plug

**VB1542** US plug

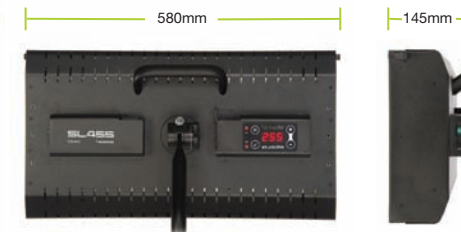
2 Panel Padded Carry Case



For 1 or 2 panels with extra pockets for other accessories and tie straps on the front for lighting stands.

**VB1525** 2 Panel Padded Carry Case

## fluorescent lighting



### Features:



### Lamp options:

### Stay cool

The thermal design and ventilation of the Studiolute DMX ensures very cool running, maintaining colour temperature and light output over long periods of operation without fans. Cool running fluorescent tubes produce little heat making the Studiolute comfortable for lighting people and perfect for heat subjects.

### Lighting control

Optional accessories such as barn-doors and grids slot quickly into the front of the units to shape or control light to your needs.

### Digital Precision

Operating Studiolute DMX lightbanks is quick, easy and intuitive. With full DMX in and out control Studiolutes can be controlled remotely, or simply from the onboard digital control panel, dimming from 100% to 1% and each unit can become a master control for banks of Studiolutes linked together via standard RJ45 ethernet/DMX cables. For photographers the power output display can be easily switched from linear to f/stop units to make metering easy.

### Built in ballast

Each Studiolute unit features a built-in 100KHz electronic ballast to regulate the voltage input and ensure flicker free operation. This makes Studiolute units particularly useful on location where the quality of electricity can be variable.

### Accessorise

Honeycomb grids, Barn-Door sets and filter frames slot quickly into the front of Studiolute units for easy creativity on the fly.

**studiolute DMX**  
DIGITAL LIGHT BANK

versatility and durability - the all-round light bank of choice.



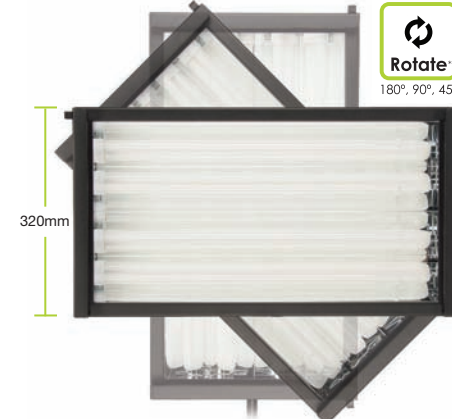
### Studiolute SL255DMX

**The smallest and most portable of the Studiolute DMX range, the two tube SL255DMX produces up to 1500 Lux (@1m) of colour balanced daylight or tungsten light.**

The centre mounted tilt and rotate yoke allows the unit to be used in the horizontal position and also at 90° and 45°.

Width:	580mm
Height:	180mm
Depth:	145mm
Weight:	3.5kg
<b>VB1300</b>	Studiolute SL255DMX Light Bank (230V)
<b>VB1301</b>	Studiolute SL255DMX Light Bank (117V)

• Add UK, EUR or AUS to the 230V code to ensure the correct power cord is included.



### Studiolute SL455DMX

**Mid-sized for a wide variety of uses on photo and video shots in the studio or on location, the four tube SL455DMX creates 3600 Lux (@1m) of brilliant light.**

The SL455DMX can be tilted or rotated 90° or 45° on its centre yoke to ensure the light is always where you need it.

Width:	580mm
Height:	320mm
Depth:	145mm
Weight:	5.4kg
<b>VB1330</b>	Studiolute SL455DMX Light Bank (230V)
<b>VB1331</b>	Studiolute SL455DMX Light Bank (117V)

**studiolute DMX**  
DIGITAL LIGHT BANK



### Studiolute SL855DMX

**The most powerful of the Studiolute DMX range, the eight tube SL855DMX delivers an impressive 8000 Lux (@1m) of controllable quality light.**

A wide range of vertical tilt is possible from the centre yoke, an optional 'U' bracket is also available for a wider range.

Width:	580mm
Height:	595mm
Depth:	145mm
Weight:	9.6kg
<b>VB1360</b>	Studiolute SL855DMX Light Bank (230V)
<b>VB1361</b>	Studiolute SL855DMX Light Bank (117V)

# studiolite accessories

Studiolite Barn-Door Set



The four leaf barn-door sets for Studiolite DMX models slot simply into the front of the unit for quick and easy control over light spill and direction.

**VB1305** SL255DMX Barn-Door Set  
**VB1335** SL455DMX Barn-Door Set  
**VB1365** SL855DMX Barn-Door Set

Studiolite 'U' Bracket



The optional 'U' Bracket can be used to replace the central yoke. Especially useful when using studiolites on a ceiling rail system or to adjust the center of gravity over a stand.

**VB1320** SL255DMX 'U' Bracket  
**VB1350** SL455DMX 'U' Bracket  
**VB1380** SL855DMX 'U' Bracket

Studiolite Grid



The Studiolite DMX Grid accessories slide quickly and easily into the front of the unit allowing tighter control over the spread of light.

**VB1310** SL255DMX Grid  
**VB1340** SL455DMX Grid  
**VB1370** SL855DMX Grid

Studiolite 'Daylight' Tube Set



Set of four 55W long life, daylight balanced fluorescent lamps for Studiolite light banks.

CRI: >90RA  
Lumens: 3000  
Colour Temperature: 5400K

**VB1382** Studiolite 5400K Tube Set.

Studiolite Filter Frame



The Studiolite DMX Filter Frame accessory simply slots into the front of the unit and allows gels or filters to be easily clipped to the front of the Studiolite.

**VB1315** SL255DMX Filter Frame  
**VB1345** SL455DMX Filter Frame  
**VB1375** SL855DMX Filter Frame

Studiolite 'Tungsten' Tube Set



Set of four 55W long life, tungsten balanced fluorescent lamps for Studiolite light banks.

CRI: >90RA  
Lumens: 3000  
Colour Temperature: 3000K

**VB1384** Studiolite 3000K Tube Set

# streamlite



Specifications:			
Power	3 x 30W		
Lamp	BW3457 (230V)		
	BW3458 (117V)		
Diameter	414mm	[16 1/4"]	inc reflector
Depth	325mm	[12 3/4"]	inc reflector
Weight	1.95kg	[4.3lbs]	inc reflector

Streamlite 330

**For a constant stream of beautiful daylight-balanced light the Streamlite is the perfect choice.**

The ultimate point and shoot light, simply switch on and the three 30W fluorescent bulbs, combined with the detachable white reflector, deliver a wide spread of directional sunlight. The 5600K (±300K) lamps mean no more time consumed on your camera white balance to eliminate the blue or green hues usually associated with fluorescent light.

• Stands not included.



Specifications:			
Power	5 x 30W		
Lamp	BW3457 (230V)		
	BW3458 (117V)		
Diameter	460mm	[18"]	inc reflector
Depth	335mm	[12 3/4"]	inc reflector
Weight	2.8kg	[6.2lbs]	inc reflector

Streamlite 530

**The Streamlite 530 is the 'Big-Easy' of continuous lighting. Five independently controlled spiral lamps make large creative lighting setups a breeze.**

Featuring the same cool-running, long-life lamps as the smaller Streamlite, two additional bulbs mean a total output equivalent up to 550W of tungsten lighting.

The unit has five switches on the back so that the lamps can be switched on or off in any configuration required.

The detachable reflector, with it's brilliant white surface, is supplied with an elasticated diffuser which fits quickly and easily on the front for a wide, soft and even light spread.

With its broad daylight balanced light, the Streamlite is the next best thing to the Sun.

**Order Codes**  
**BW3460** Streamlite 530 (230V)  
**BW3465** Streamlite 530 (117V)  
**BW3457** 30W 5600K Lamp (230V)  
**BW3458** 30W 5600K Lamp (117V)

## tungsten lighting



The Pixel is a compact, rugged 300W focusing floodlight designed for a wide range of photographic & video lighting applications.

Featuring a dedicated, in-line control unit, the Pixel combines a soft-start on/off switch, to extend the life of the bulb, with a rotary dimmer control providing precise dimming. The unit can be used on AC supplies from 90V-250V so the Pixel can be used just about anywhere in the world with a simple bulb change.



## Features:



Zoom

95°-115°



Dimming

100%-1%



Tungsten

3200°K



Lamp Care

90-250VAC\*



Multi-Voltage

Two Years



Warranty

The sliding beam-angle adjuster on the Pixel gently varies the bulb's position in relation to the integrated reflector to provide smooth, continuous beam angle adjustments while preserving bulb life.

A long 6m mains cable means the Pixel can be easily placed anywhere in the studio, or on assignment, wherever standard mains sockets are available. A snap-on mains plug adaptor is supplied with each Pixel, as required, according to the region for which it is supplied.

The 300W quartz-halogen bulb, protected by safety glass, produces an extremely bright, 3200°K colour balanced output and is interchangeable with an optional 150W bulb when lower power is required.

But power is nothing without control, so the Pixel system features a range of optional light control accessories including a quick-fit 4-leaf barndoor set, a glass daylight correction filter and a glass diffusion filter for use where softer lighting is needed.

The Pixel Zoom Light has been designed to be durable and rugged enough to withstand the rigours of professional studio or location use with a tough, yet lightweight, and small body combined with efficient cooling vents to help dissipate heat. The compact size combined with a variable angle mount means the Pixel can be used in a wide variety of locations, mounted on stands or suspended from ceiling track systems.

## Order Codes

**VB1200** Pixel Zoom Light (230V)

**VB1201US** Pixel Zoom Light (120V)

## Specifications:

Bulb:	300W (Standard) 150W (Option)
Lux @1m:	5700 (Spot) 2100 (Flood)
Colour Temperature:	3200K (Standard) 3400K (Option)
Beam Angle:	95° (Spot) to 115° (Flood)
Power Variation:	100% - 1%
Power Control:	In-Line Dimmer
Operating Voltage:	90-130V AC 50Hz 190-250V AC 60Hz
Width:	160mm (inc bracket)
Height:	100mm
Body Length:	180mm
Weight:	1.7kg

• Pictured with optional barn-door set.

**pixel**  
variable zoom spotlight



## Pixel Three Point Lighting Kit

The Limelite Pixel is also available as a complete 3-head kit designed to make a full 3-point lighting set portable and easy to carry to different assignments. Kit includes:  
3 x Pixel 300W Zoom Light,  
3 x 4-leaf barndoor sets,  
3 x compact lighting stands  
and a padded 3-head kit bag

## Order Codes

**VB1250** Pixel 3-Head Kit (230V)

**VB1251US** Pixel 3-Head Kit (117V)

## Pixel Lamps

Pixel Lamps are available in 300W and 150W in 120V and 230V versions.

## 300W Lamps

**VB1210** 3400K 300W Lamp (230V)

**VB1215** 3200K 300W Lamp (230V)

**VB1220** 3400K 300W Lamp (120V)

**VB1221** 3200K 300W Lamp (120V)

## 150W Lamps

**VB1225** 3400K 150W Lamp (230V)

**VB1226** 3200K 150W Lamp (230V)

**VB1227** 3400K 150W Lamp (120V)

**VB1228** 3200K 150W Lamp (120V)

## pixel accessories

## Pixel Barn-Door Set



Four-leaf barn-door set for controlling the spread of light. Attaches easily to the front of the Pixel with a spring mount.

**VB1205** Pixel Barn-Door Set

## Pixel Filters



Slot-in glass filter discs to change the characteristics of the light output.

**VB1230** Dichroic Glass Daylight Filter Disc

**VB1235** Frosted Glass Diffusion Filter Disc

## Multi-Voltage Dimmer



Spare or replacement Multi-voltage in-line dimmer unit for use with Pixel or similar lights.  
**VB1245** Multi-voltage Dimmer.

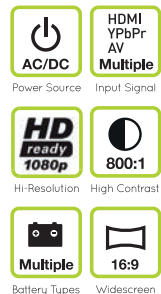
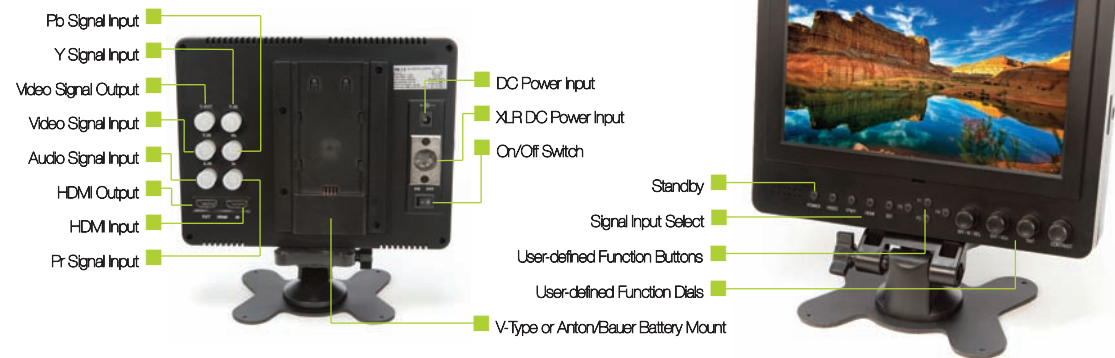
## Pixel 3-Head Kit Bag



Padded Case designed to accommodate three Pixel heads with barndoors and stands.  
**VB1240** Pixel 3-Head Kit Bag.



## HD monitors



### M7 HD Field Monitor

Lightweight, portable and versatile, the Limelite M7 7" HD Field Monitor is a super-high resolution screen which can be used as a large viewfinder mounted on-camera, perfect for HD-DSLR cameras and HD camcorders, or as a monitor with a camera rig or crane ideal for directors previewing their creative flair.

Multiple signal and power inputs make the M7 one of the most versatile and user-friendly monitors available to photographers and videographers today.

#### Features:

- HDMI & YPbPr inputs, to connect with DSLR and Full HD video cameras.
- HDMI output for loop through.
- 16:9 Aspect Ratio (switchable to 4:3).
- RGB monochromatic display, 16:9, 4:3 and full screen aspect ratio switch, underscan, overscan, pixel-to-pixel, centre marker, screen marker, HDMI & Video out.
- Supplied with Mains adaptor, Sony NP-F & Canon LP-E6 battery mounts and V-lock or Anton/Bauer adaptor, Hotshoe Mount, Desktop Stand, HDMI cable & Sunshade.

#### Specifications:

Resolution:	1024x600, up to 1920x1080
Brightness:	250cd/m2
Contrast:	700:1
Viewing Angle:	160°H / 150°V
Input Voltage:	DC 6.5-24V (XLR Connection)
Input Signal:	HDMI, YPbPr, AV
Output Signal:	HDMI
Width:	194mm
Height:	150mm
Depth:	38.5mm (158.5 with sunshade)
Weight:	480g

#### Order Codes

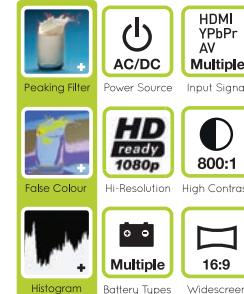
##### With V-Mount Battery Adaptor

<b>VB1600UK</b>	M7 HD Field Monitor (UK Plug)
<b>VB1600EUR</b>	M7 HD Field Monitor (EU Plug)

##### With Anton/Bauer Battery Adaptor

<b>VB1600US</b>	M7 HD Field Monitor (USA Plug)
-----------------	--------------------------------

advanced creative functions - super-high resolution screen.



### M7plus+ HD Field Monitor

The ultra-versatile M7plus+ HD Field Monitor takes professional monitoring to the next level. Designed to help you achieve the perfect picture, regardless of changing conditions, The M7plus+ features a number of advanced extra functions including; **Histogram and Peaking, Exposure and False Colour** Filters. Desktop, camera or stand mountable, it can be easily placed anywhere for convenient monitoring of your images. A variety of battery mounts make this monitor as useful in the field as in the studio.

#### Features:

- HDMI & YPbPr inputs, to connect with DSLR and Full HD video cameras.
- HDMI output for loop through.
- 16:9 Aspect Ratio (switchable to 4:3).
- RGB monochromatic display, 16:9, 4:3 and full screen aspect ratio switch, underscan, overscan, pixel-to-pixel, centre marker, screen marker, HDMI & Video out.
- Supplied with Mains adaptor, Sony NP-F & Canon LP-E6 battery mounts and V-lock or Anton/Bauer adaptor, Hotshoe Mount, Desktop Stand, HDMI cable & Sunshade.

#### Specifications:

Resolution:	1024x600, up to 1920x1080
Brightness:	250cd/m2
Contrast:	800:1
Viewing Angle:	160°H / 150°V
Input Voltage:	DC 6.5-24V (XLR Connection)
Input Signal:	HDMI, YPbPr, AV
Output Signal:	HDMI
Width:	194mm
Height:	150mm
Depth:	38.5mm (158.5 with sunshade)
Weight:	480g

#### Order Codes

##### With V-Mount Battery Adaptor

<b>VB1700UK</b>	M7 HD Field Monitor (UK Plug)
<b>VB1700EUR</b>	M7 HD Field Monitor (EU Plug)

##### With Anton/Bauer Battery Adaptor

<b>VB1700US</b>	M7 HD Field Monitor (USA Plug)
-----------------	--------------------------------



## monitor accessories

### Battery Mounts



Adaptors to mount different HD-DSLR or camcorder batteries to the M7 or M7plus+ monitors.

- VB1665** Sony NP-F Mount
- VB1625** Canon LP-E6 Mount
- VB1626** Nikon EN-EL15 Mount
- VB1605** Sony NP-QM Mount

### Battery Adaptors



Adaptors to mount V-lock or Anton/Bauer (G-type) batteries to the M7 or M7plus+ monitors.

- VB1630** V-Mount Battery Adaptor
- VB1660** Anton/Bauer Adaptor

### Hotshoe Mount



Adaptor to mount an M7 or M7plus+ monitor to the hotshoe of a camera.

- VB1634** Hotshoe Swivel Mount

### Tilting Desktop Stand



Tilt adjustable desktop stand for Limelite M7 or M7plus+ monitors.

- VB1640** Tilting Desktop Stand

### Mains Adaptors



Spare or replacement mains adaptor plug for monitors.

- VB1645UK** AC Mains Plug (UK)
- VB1645EUR** AC Mains Plug (EU)
- VB1645US** AC Mains Plug (US)
- VB1645AUS** AC Mains Plug (AUS)

### HDMI to Mini HDMI Cable



Cable for plugging the Mini HDMI connector on the M7 and M7plus+ monitors to a full size HDMI port.

- VB1650** HDMI to Mini HDMI Cable

### Detachable Sunshade



Detachable sunshade, to allow the screen to be clearly viewed, even in bright sunshine. Folds flat to protect the screen.

- VB1655** Detachable Sunshade.

### Monitor Carry Case



Padded case designed to carry an M7 or M7plus+ monitor together with power supply and cables.

- VB1620** Monitor Carry Case

## reflectors



### Gold/Silver Reflector Discs

These innovative, collapsible discs offer two reflector options from one tool, available in three sizes with a double-sided warm gold or silver fabric. The discs can be instantly flipped so you always have the right tool on hand. Reflector Discs are extremely lightweight, easy to use and do not require any assembly. Their carbon-steel frames are welded to withstand rigorous use and provide years of dependable performance. When not in use, they fold effortlessly into small circles one-third of their open size.

### 81cm Gold/Silver Disc

Our smallest disc. The reversible 80cm Gold/Silver Reflector Disc is a double sided reflector that folds down to just 28cm when not in use. Perfect for portability so it can be kept handy at all times. It is ideal for adding extra illumination to a subject without having to use extra lights. An optional telescopic disc holder is available which clamps onto the rim of the reflector and mounts to any standard 5/8" stud lighting stand mount.

- BW3225** 81cm (32") Gold/Silver Disc
- BW3275** Telescopic Disc Holder

### 107cm Gold/Silver Disc

Our mid-sized 107cm Gold/Silver Reflector Disc is a reversible double sided reflector that folds down to just 40cm when not in use. Bounce natural light to just where you need it - great for filling in shadows. The gold side adds warmer tones to light and the silver side cooler tones. An optional telescopic disc holder is available which clamps onto the rim of the reflector and mounts to any standard 5/8" stud lighting stand mount.

- BW3245** 107cm (42") Gold/Silver Disc
- BW3275** Telescopic Disc Holder

### Gold/Silver Oval Disc

Our largest reflector, the 122x92cm Oval Gold/Silver Reflector Disc is a reversible double sided reflector that, despite its large size, also folds down to just 40cm when not in use. Bend and bounce available light to your will - perfect for groups of people. An optional telescopic disc holder is available which clamps onto the rim of the reflector and mounts to any standard 5/8" stud lighting stand mount.

- BW3265** 122x92cm (48x36") Oval
- BW3275** Telescopic Disc Holder

## camera support



Fitted Flight Case included.



**comodo**<sup>TM</sup>  
Camera Support Rig System

### Features:



**The Comodo range from Limelite is a range of handheld and shoulder mounted rigs for professional shooting.**

Three models of rugged, high specification rigs designed to convert your HD-DSLR camera into a professional video rig.

The 'Go' is perfect for creating high impact results, The 'Evo' offers a lighter weight shoulder rig, and the 'Pro' offers a fully versatile and durable solution to your filming requirements.

The modular design of the Comodo rigs means they can quickly and easily be configured to suit your individual shooting needs. The supplied reversible follow focus, fitted with an adjustable gear band, can be left or right hand mounted and the position of the padded hand grips can be adjusted up or down as required.

The adjustable camera baseplate features a quick-release system for mounting your camera and an adjustable LCD attachment arm and clamp are provided as standard.

### Built for comfort and speed.

The ø15mm rods which create the Comodo framework are lightweight carbon fiber coated aluminium, and the shoulder rest is fully padded which is essential for a long shoot.

Every rig in the Comodo range comes with a fully fitted flight case and other accessories to help you to get shooting straight away, including an adjustable camera baseplate with tripod platform and an LCD attachment adaptor.

The range topping specifications of the Comodo Pro also includes a widescreen matte box, a dismountable top handle and support cage, and a removable 1kg counterweight and mount to help balance a heavier laden rig. The widescreen matte box features two rotating four-by-five-point-six filter holders, adjustable top and side flags, and a swing away mount.

Whatever you are shooting, from sporting events and music videos to high octane action, there is a Comodo for you.

**comodo** *Go*  
CAMERA SUPPORT RIG SYSTEM



Comodo Go

**The Limelite Comodo Go is the core of the Comodo Camera Support Rig system and the easiest way to get started.**

### Comodo Go Kit includes:

- Comodo Follow Focus System • Crossbar Adapter
- Camera Mount and Plate • LCD Attachment Adapter
- LCD Attachment Arm • 2 x 21cm Carbon-Fiber Rods
- 2 x 27cm Carbon-Fiber Rods • 2 x Comfort Grip Handles
- Comodo Go Fitted Flight Case.

**VB1100** Comodo Go Handheld Camera Rig.

**comodo** *Evo*  
CAMERA SUPPORT RIG SYSTEM



Comodo Evo

**The Limelite Comodo Evo with its offset shoulder pad is the bridge between the Comodo Go and Pro.**

### Comodo Evo Kit includes:

- Comodo Follow Focus System • Crossbar Adapter
- Camera Mount and Plate • LCD Attachment Adapter
- LCD Attachment Arm • 1 x Z Bracket
- 2 x 21cm Carbon-Fiber Rods
- 2 x 27cm Carbon-Fiber Rods • 2 x Comfort Grip Handles
- 1 Shoulder Pad • Comodo Evo Fitted Flight Case.

**VB1101** Comodo Evo Shoulder Camera Rig.

**comodo** *Pro*  
CAMERA SUPPORT RIG SYSTEM



Comodo Pro

**The Limelite Comodo Pro is the complete package for professionals shooting with video cameras or HD-DSLRs.**

### Comodo Pro Kit includes:

- Comodo Follow Focus System • Crossbar Adapter
- Camera Mount and Plate • LCD Attachment Adapter • LCD Attachment Arm • 2 x 21cm Carbon-Fiber Rods • 2 x 27cm Carbon-Fiber Rods • 2 x 50cm Carbon-Fiber Rods • 2 x Comfort Grip Handles • 1 Shoulder Pad • 1 Wide-Screen Matte Box • Cage 'U' Bar • Top Carrying Handle • 35cm Front Crossbar • 1kg Counterweight • Counterweight Mount
- Comodo Pro Fitted Flight Case.

**VB1102** Comodo Pro Shoulder Camera Rig.

## comodo accessories

Comodo Follow Focus System



**VB1115** Comodo Follow Focus System

Crossbar Adapter



**VB1121** Crossbar Adapter

Camera Mount & Plate



**VB1140** Camera Mount & Plate

LCD Attachment Adapter



**VB1145** LCD Attachment Adapter

LCD Attachment Arm (Short)



**VB1615** LCD Attachment Arm (Short)

Counterweight Mount



**VB1161** Counterweight Mount

21cm Carbon Fiber-AL Rod



**VB1152** 21cm Carbon Fiber-AL Rod

27cm Carbon Fiber-AL Rod



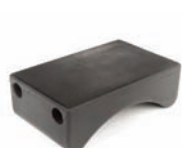
**VB1154** 27cm Carbon Fiber-AL Rod

Z Bracket



**VB1125** Comodo Z Bracket

Shoulder Pad



**VB1135** Shoulder Pad

Wide-Screen Matte Box



**VB1110** Wide-Screen Matte Box

Top Carrying Handle



**VB1123** Top Carrying Handle

Cage 'U' Bar



**VB1130** Cage 'U' Bar

Counterweight (1kg)



**VB1160** Counterweight (1kg)

50cm Carbon Fiber-AL Rod



**VB1157** 50cm Carbon Fiber-AL Rod

35cm Front Crossbar



**VB1122** 35cm Front Crossbar

Comodo Go Fitted Flight Case



**VB1170** Comodo Go Fitted Flight Case

Comodo Evo Fitted Flight Case



**VB1171** Comodo Evo Fitted Flight Case

Comodo Pro Fitted Flight Case



**VB1172** Comodo Pro Fitted Flight Case

Front Handle Set (Short)



**VB1124** Front Handle Set (Short)

Front Handle Set (Long)



**VB1120** Front Handle Set (Long)

### Symbol Key

- ▲ Included with Comodo 'Go' Kit
- Included with Comodo 'Evo' Kit
- Included with Comodo 'Pro' Kit

## comodo accessories



# lighting support



Backlight Stand

The very smallest of our range of professional light stands, allowing you to place your lights very nearly on the floor at just 7cm from the ground or up to a maximum height of 85cm.

Max Height	85cm	[34"]
Min Height	7cm	[3"]
Closed Length	45cm	[18"]
Weight	3kg	[6.6lbs]
Order Code	<b>BW6600</b>	



Folding Stand

A super versatile stand, able to fold down to a small and highly portable size with a narrow profile, great for storage. Perfect for location lighting - or lightweight small lighting duty in the studio.

Max Height	190cm	[6'4"]
Min Height	49cm	[32"]
Closed Length	48cm	[33"]
Weight	0.9kg	[3.1lbs]
Order Code	<b>BW6625</b>	



Handy Stand

Designed to be lightweight and small enough for portability as well as durable enough to withstand the rigours of demanding studio and location work. Included in Pixel three head kits.

Max Height	225cm	[6'4"]
Min Height	82cm	[32"]
Closed Length	85cm	[33"]
Weight	1.4kg	[3.1lbs]
Order Code	<b>BW6605</b>	



Compact Stand

This portable and lightweight three-section entry-level lighting support stand is our best selling stand. With its 3 meter reach, it is useful for a wide variety of uses - in or out of the studio.

Max Height	305cm	[10']
Min Height	83cm	[33"]
Closed Length	86cm	[34"]
Weight	1.7kg	[3.8lbs]
Order Code	<b>BW6610</b>	



Compact Air Stand

This air-cushioned, portable and lightweight lighting support stand affords extra protection with a cushion of air to any equipment mounted to it, in the event of rapid descent.

Max Height	311cm	[10']
Min Height	99cm	[33"]
Closed Length	86cm	[34"]
Weight	1.5kg	[3.8lbs]
Order Code	<b>BW6611</b>	



Portable Stand

An all-round, superb, all-purpose lighting support stand, essential when a bit of extra height is needed, it reaches 11¼' ( 355cm) in height and closes down to 39" (100cm) for easy transportation.

Max Height	355cm	[11¼']
Min Height	97cm	[38"]
Closed Length	100cm	[39"]
Weight	1.8kg	[3.9lbs]
Order Code	<b>BW6615</b>	



Heavy Duty Stand

This ultra-durable and sturdy support stand is designed to easily withstand the rigours and demands of a busy studio environment. Perfect for heavier lighting when out on location.

Max Height	397cm	[13']
Min Height	112cm	[44"]
Closed Length	115cm	[45"]
Weight	2.4kg	[5.3lbs]
Order Code	<b>BW6617</b>	



Heavy Duty Air Stand

The air-cushioned sections of this ultra-durable lighting support stand provide extra protection to any equipment mounted on the stand by preventing the sections from closing together quickly.

Max Height	395cm	[13']
Min Height	130cm	[44"]
Closed Length	117cm	[46"]
Weight	3kg	[5.3lbs]
Order Code	<b>BW6618</b>	



Double Riser C Stand

This three-section stand folds flat making this heavy-duty double riser easy to transport and store. The shape and low profile of the Base leg allows stands to be placed closer together.

Max Height	270cm	[11¼']
Min Height	128cm	[38"]
Closed Length	101cm	[39"]
Weight	5kg	[3.9lbs]
Order Code	<b>BW7040</b>	



Boom Stand

This heavy-duty stand can be used with or without the wheels supplied and will support heavier lights or lighting booms, making lights easy to manoeuvre and providing great stability.

Max Height	218cm	[13']
Min Height	117cm	[44"]
Closed Length	115cm	[45"]
Weight	7.5kg	[5.3lbs]
Order Code	<b>BW6620</b>	



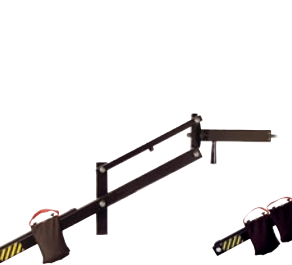
**Limelite booms feature a parallelogram design that makes it easy to precisely raise or lower lights without changing the angle of light in relation to your subject.**

For precise control, the head extension offers rotation up to 360° for unlimited directional control. All angle movements are controlled by a handle located at the pivot point, making it easy to see exactly how the light falls on the subject.

The sliding counterweight system easily adjusts for different sizes of lights and boxes.

Just slide the weight bags to create the perfect balance and lock them securely. Once you have the balance set for your light source, there is no need to lock the boom into position, simply raise or lower the light to the height required and let go. The boom stays put without locking, clamping or cranking. The minimised length of the counterweight section makes this the perfect boom for smaller studios. The boom assembles in just minutes and requires no tools.

Compact Boom



Great for location & tabletop photographers. Measures only 132cm (52") long with a reach of 81cm (32").

Supplied with a counterweight bag, suitable for up to 6.8kg (15lbs) of weights, and accepts optional head extensions of 46cm (18"), 61cm (24") and 76cm (32"). Measures 1m (38") unassembled, weighs 4kg (9lbs) and mounts onto any cine-type light stand with a 5/8" female socket.

**VB1180** Compact Boom

Standard Boom



Perfect large sets and low angles. Features calibrated angle indicators on the height and rotating head movements. Measures 2.9m (9½") overall, has a 1.8m (6') reach with a standard 46cm (18") head extension and is supplied with two unfilled counterweight bags. For longer reach, 61cm (24"), 76cm (30") and 122cm (48") head extensions are available. Measures 1.5m (60") unassembled and weighs 7kg (16lbs).

**VB1185** Standard Boom



Boom Accessories

For a longer reach, four optional extended head sections are available for the Limelite Boom.

**RD1219** 18" (46cm) Head Extension  
**RD1225** 24" (61cm) Head Extension  
**RD1231** 30" (76cm) Head Extension  
**RD1249** 48" (122cm) Head Extension

To change the orientation of the mounting stud on the end of the boom from horizontal to vertical.

**RD1280** Vertical Mount Stud (½" or 5/8")

Unfilled counterweight bags are designed to be filled with sand or lead shot and mounted on the sliding plate of the boom tail section to add stability.

**RD1290** Small Counterweight Bag  
**RD1295** Large Counterweight Bag

A set of spare Thumbscrews for securing counterweight bags to the boom.

**RD1330** Thumbscrews (set of four)

Boom Stand

This heavy-duty stand can be used with or without the wheels supplied and will support heavier lights or lighting booms, making lights easy to manoeuvre and providing great stability.

Max Height	218cm [13']
Min Height	117cm [44"]
Closed Length	115cm [45"]
Weight	7.5kg [5.3lbs]
Order Code	<b>BW6620</b>



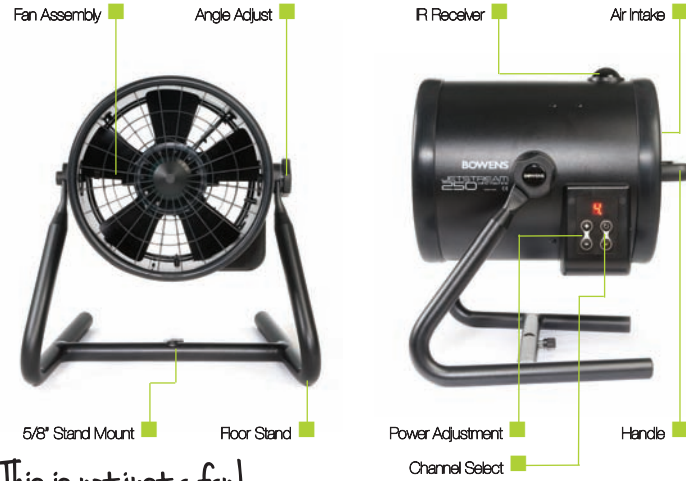
Background Support System

The background support system is designed for use with either full or half width paper backgrounds and any fabric background. This versatile system is 3 meters wide and can collapse down to fit into a handy carry bag, making it ideal for transporting to different locations outside the studio.

Max Height	247cm [9']
Max Width	365cm [12']
Bag Length	112cm [3'8"]
Kit Weight	7.7kg [17lbs]
Order Code	<b>BW6090</b>



## wind machines



*This is not just a fan!*

When precision, pin-point control over the speed and direction of air-flow is needed, a fan simply will not do.

You need a Jetstream, the industry-standard professional wind machine.

The cylindrical design of the Jetstream wind machines allow you to **create a 'tube' of air** which means you can point the air anywhere you need it without disturbing another part of your set – **this is not possible with a regular fan.**

The volume of air-flow can be varied from gentle breeze to intense bluster and beyond with control from either the on-board digital control panel or via a Gemini infra-red remote control (BW3960). The remote control has eight unique IR channel settings allowing you to control Jetstreams individually or in banks to create different effects. The Jetstream can be placed on the floor and angled to suit or mounted onto any 5/8" support stand or ceiling track system.

## JETSTREAM 250 wind machine



### Jetstream 250 Wind Machine

Our standard sized professional wind machine has become an industry standard, seen in photo and TV studios and fashion runways all over the world.

Length:	315mm	[12½"]
Width:	260mm	[10½"]
Height:	260mm	[10½"]
Weight:	9.6kg	[21.1lbs]
Order Code:	<b>BW2555</b>	(230V)
Order Code:	<b>BW2556</b>	(117V)

## JETSTREAM 350 wind machine



### Jetstream 350 Wind Machine

When more air-flow is required on set, the larger diameter Jetstream 350 can provide big air with precision control over the speed and direction.

Length:	390mm	[15½"]
Width:	365mm	[14½"]
Height:	365mm	[14½"]
Weight:	13.3kg	[29.3lbs]
Order Code:	<b>BW2557</b>	(230V)
Order Code:	<b>BW2558</b>	(117V)

## Limelite Global Distribution Network

**Argentina**  
Bey Corporation  
+54 114 771 1895

**Australia**  
C.R Kennedy & Co  
+61 3 9823 1555

**Austria**  
Delta Marketing  
+43 31 668 135 023

**Bahrain**  
House of Photography  
+973 1762 3071

**Belgium**  
Studio Tecnic  
+32 2 201 0465

**Bulgaria**  
Best Electronics  
+359 2963 0459

**Canada**  
Henry's  
+1 416 941 0579

**China**  
Bowens China  
+86 21 5138 9340

**Croatia**  
Prizma Co.  
+385 1389 5127

**Cyprus**  
F.C Trading Co.  
+357 267 0806

**Czech Republic**  
Ades  
+420 2 5721 1991

**Denmark**  
Goecker Handel  
+45 35 821 100

**Estonia**  
Fotoluks  
+372 655 6045

**Finland**  
Varustamo  
+358 103874100

**France**  
Technicaphot  
+33 1 40 10 5555

**Germany**  
Calumet Photographic  
+49 40 423 1600

**Greece**  
H. Alexandrou  
+30 210 723 6847

**Hong Kong**  
Regent Co.  
+852 2526 0576

**Hungary**  
Studioline Fototechnika  
+36 1222 4200

**Iceland**  
Beco  
+354 533 3411

**India**  
Foto Planet  
+91 2244430101

**Indonesia**  
Oktagon  
+62 21 420 4545

**Iran**  
Deedfaraz Co.  
+98 21 884 7600

**Ireland**  
D.M.L.  
+353 1 465 8600

**Israel**  
Zandberg  
+972 3629 2321

**Italy**  
Photofuture  
+39 070 7545087

**Japan**  
Take Inc.  
+81 35159 4711

**Kuwait**  
Ashraf & Co.  
+965 180 5151

**Latvia**  
SIA Master Foto  
+371 6770 4396

**Lebanon**  
Guibenk Corporation  
+961 472 3777

**Malaysia**  
Ruby Far East  
+60 34295 3095

**Malta**  
Ilab Photo  
+356 2744 7701

**Mexico**  
Foto Regis  
+52 5448 2000

**Netherlands**  
Calumet Photographic  
+31 20 697 7171

**New Zealand**  
C.R Kennedy  
+64 9 276 3271

**Norway**  
Rafo Engros  
+47 2317 5560

**Peru**  
Wilhelmi Monge  
+51 1241 4493

**Philippines**  
JT Photoworld  
+63 2 5366 590

**Poland**  
Foto 7  
+48 32 238 2514

**Portugal**  
LFMPRO  
+351 255 539 230

**Qatar**  
Salam Technical Services  
+974 832 050

**Romania**  
Highlight Photo Studio  
+40 21 7961 702

**Russia**  
FotoFrame  
+7 495 234 9915

**Serbia Montenegro**  
Pro-Light  
+381 11 277 4704

**Singapore**  
Ruby Photo  
+65 6254 6582

**Slovakia**  
Darian  
+421 911 92 72 52

**Slovenia**  
Euro Foto  
+386 04 6000 202

**South Africa**  
GL Agencies  
+27 117921097

**South Korea**  
Mijoo Rico  
+82 2 517 1210

**Spain**  
Bach Import  
+34 9 3330 9408

**Sweden**  
Scandinavian Photo  
+46 36 37 6825

**Switzerland**  
Profot  
+41 41 769 1080

**Syria**  
Puzant Yacoubian & Sons  
+963 11 212 8600

**Taiwan**  
Nay Cherng  
+886 22396 0170

**Taiwan**  
U-Gem Corporation  
+886 2 2393 3157

**Thailand**  
Krung Siam Enterprise  
+66 2 669 5425

**Tunisia**  
La Promotion de l'image  
+216 70 838 264

**Turkey**  
Kadri Senruh  
+90 212 522 99 91

**Ukraine**  
Fotosale  
+380 44 531 81 60

**United Arab Emirates**  
Salam Studio & Stores  
+971 4 704 8484

**United Kingdom**  
Bowens International  
+44 (0)1255 422807

**USA**  
Bowens USA  
+1 312 573 2725

**Vietnam**  
Leduc  
+84 8 820 5571

www.limelite.uk.com

limelite

All models and technical specifications featured in this brochure may be subject to change without notice. E&OE. © 2013 Bowens International Limited.

Inclusion in this brochure is not a guarantee of availability in all regions. Check with local Limelite distributors for regional availability. Limelite® and the lime & bulb logo are registered trademarks of Bowens International Limited.